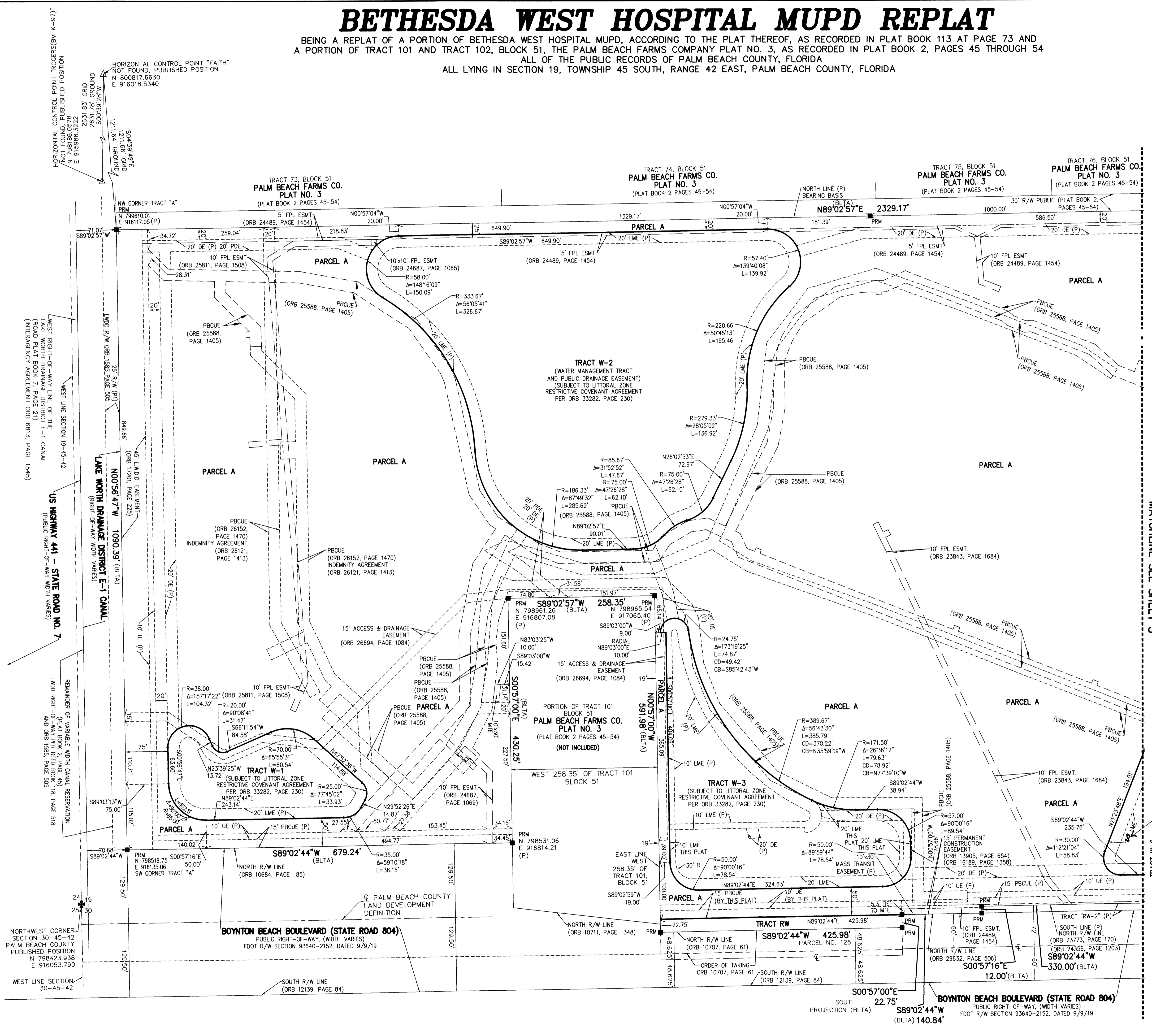


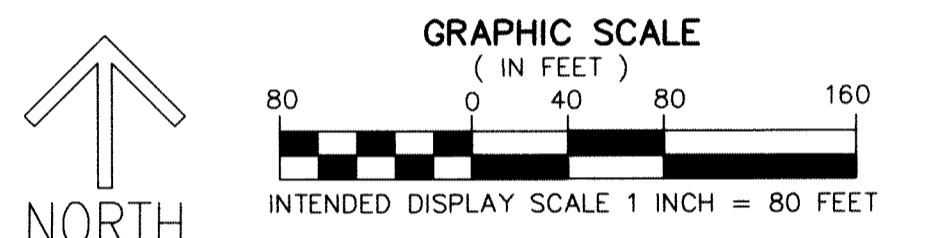
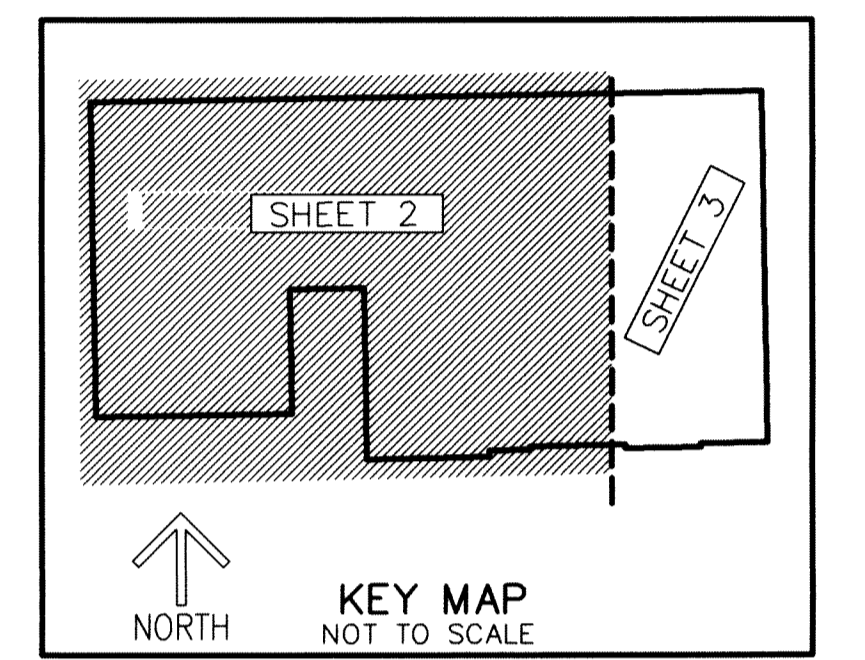
BETHESDA WEST HOSPITAL MUPD REPLAT

BEING A REPLAT OF A PORTION OF BETHESDA WEST HOSPITAL MUPD, ACCORDING TO THE PLAT THEREOF, AS RECORDED IN PLAT BOOK 113 AT PAGE 73 AND A PORTION OF TRACT 101 AND TRACT 102, BLOCK 51, THE PALM BEACH FARMS COMPANY PLAT NO. 3, AS RECORDED IN PLAT BOOK 2, PAGES 45 THROUGH 54 ALL LYING IN SECTION 19, TOWNSHIP 45 SOUTH, RANGE 42 EAST, PALM BEACH COUNTY, FLORIDA

73



SHEET 2 OF 3



NOTES
COORDINATES, BEARINGS AND DISTANCES
COORDINATES SHOWN ARE GRID DATUM = NAD 83 1990 ADJUSTMENT
ZONE = FLORIDA EAST
LINEAR UNIT = US SURVEY FEET
COORDINATE SYSTEM 1983 STATE PLANE
TRANSVERSE MERCATOR PROJECTION
ALL DISTANCES ARE GROUND UNLESS OTHERWISE NOTED
SCALE FACTOR = 1.000018617
GROUND DISTANCE X SCALE FACTOR = GRID DISTANCE
BEARINGS AS SHOWN HEREON ARE GRID DATUM, NAD 83 1990 ADJUSTMENT, FLORIDA EAST ZONE.

LEGEND/ ABBREVIATIONS
C - CENTERLINE
Δ - DELTA (CENTRAL ANGLE)
L - ARC LENGTH
R - RADIUS
CB - CHORD BEARING
CD - CHORD DISTANCE
DE - DRAINAGE EASEMENT
ESMT - EASEMENT
FDOT - FLORIDA DEPARTMENT OF TRANSPORTATION
FND - FOUND
FPL - FLORIDA POWER & LIGHT COMPANY
IR - IRON ROD
LB - LICENSED BUSINESS
LME - LAKE MAINTENANCE EASEMENT
LWDD - LAKE WORTH DRAINAGE DISTRICT
MUPD - MULTI USE PLANNED DEVELOPMENT
ORB ORB - OFFICIAL RECORD BOOK
PBCUE - PALM BEACH COUNTY UTILITY EASEMENT
PC - POINT OF CURVATURE
PCC - POINT OF COMPOUND CURVATURE
PDE - PUBLIC DRAINAGE EASEMENT
PRC - POINT OF REVERSE CURVATURE
PNT - POINT OF NON-TANGENCY
PT - POINT OF TANGENCY
R/W - RIGHT-OF-WAY
N - NORTHING WHEN USED WITH COORDINATES
E - EASTING WHEN USED WITH COORDINATES
UE - UTILITY EASEMENT
PRM - INDICATES SET 4" X 4" X 24" CONCRETE PERMANENT REFERENCE MONUMENT WITH ALUMINUM DISK STAMPED "PRM C&W LB3591" UNLESS OTHERWISE NOTED
▲ - DENOTES SET PERMANENT REFERENCE MONUMENT NAIL AND DISC STAMPED "PRM" LB 3591 UNLESS OTHERWISE NOTED
△ - DENOTES HORIZONTAL CONTROL POINT
✱ - INDICATES SECTION CORNER
✱ - INDICATES 1/4 SECTION CORNER
(P) - BETHESDA WEST HOSPITAL MUPD PLAT BOOK 113, PAGES 73-75
(P1) - PALM BEACH FARMS COMPANY PLAT NO. 3 (BLTA)
(BLTA) - BOUNDARY LINE TRACT "A" BETHESDA WEST HOSPITAL MUPD PLAT BOOK 113, PAGES 73-75

THIS INSTRUMENT PREPARED BY
DAVID P. LINDLEY
OF
CAULFIELD & WHEELER, INC.
SURVEYORS - ENGINEERS - PLANNERS
7900 GLADES ROAD, SUITE 100
BOCA RATON, FLORIDA 33434 - (561)392-1991